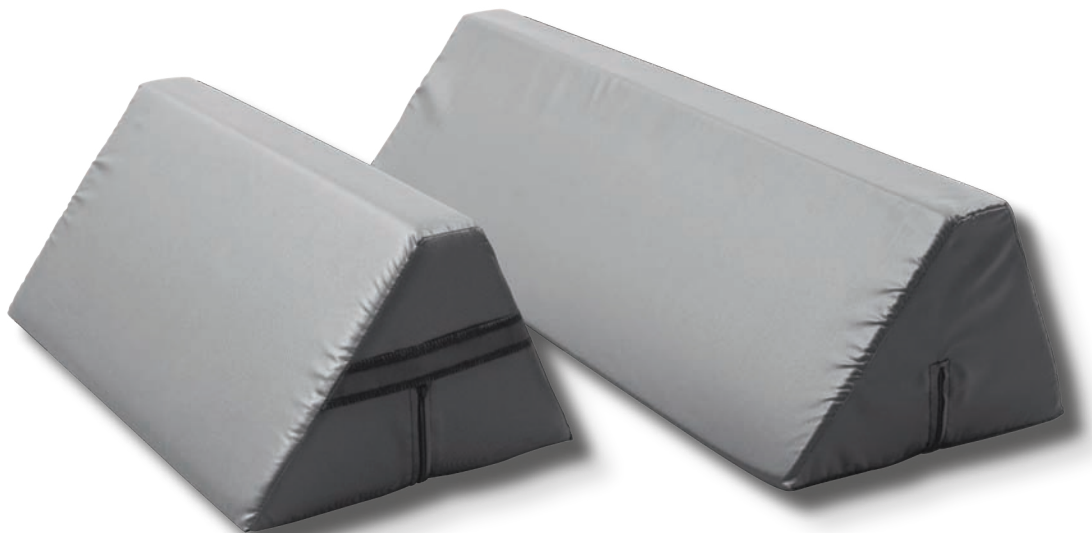


# Positioning Wedge

Manual English

 **etac**<sup>®</sup>



# Illustrations

Illustration 1



# Contents

	<b>Heading</b>	<b>Page</b>
1.	General/Features.....	4
2.	Practical handling.....	5
3.	Handling/Materials/Cleaning .....	6
4.	Size/Combinations .....	7

# General

Thank you for choosing an Etac product.

To avoid accidents and injury when moving and handling the products, read the manual carefully.

The person described as "the client" in this user manual is the person who is lying or sitting on the product. The carer or carers are the people who manoeuvre the product.



**This symbol appears alongside the text in the manual. It draws the reader's attention to points at which there may be a risk to the health and safety of the client or carer.**

The products comply with the standards applicable for Class 1 products in the European Council Directive MDD 93/42/EEC on medical devices.

At Etac we strive to improve our products all the time and therefore we reserve the right to make changes to products without prior warning. All measurements given on illustrations and similar material are for guidance only and Etac cannot be held liable for errors and defects.

The information given in this manual, including recommendations, combinations and sizing, does not apply to special orders and modifications. If the customer makes adjustments, repairs or combinations not predetermined by Etac, the Etac CE certification and Etac warranty will be voided. If in doubt, please contact Etac.

Warranty: Two-year warranty on material and manufacturing defects, provided that the product is used correctly.

For further information on the Etac transfer range, see [www.etac.com](http://www.etac.com).

The product can be scrapped in accordance with national regulations.



Washing



Iron



Never leave on the floor



Max. weight



Handwash



Do not dryclean



Warning



The product can be scrapped in accordance with national regulations



Wipe off



Do not bleach



Read the User Manual



Manufacturer



Tumbledry



Risk of sliding down



Batch no./Lot no.



Class 1 - European Council Directive MDD 93/42/EEC on medical devices

# Features

Positioning Wedges can be used to support and position in connection with baths, lower body hygiene, bedbaths, resting, raising head or foot end, etc.

# Use

---

## Positioning

---

One or more Positioning Wedges can be positioned as best suits the individual client, to help maintain the client's position.

---

## Use

---

The client feels more comfortable and relaxed in the position. Carers can position the client using a Positioning Wedge or Wedges. As the carer does not have to stand and support the client, bathing, lower body hygiene, bedbaths, etc. are far less a strain on the carer.

## Use

### Special features

Always check the product before use and after washing.

Never use a defective product. If the product shows signs of wear-and-tear, it must be scrapped.

Read these instructions carefully.

It is important that carers receive instruction in manual handling.

Etac offers advice and training for carers.

For further information, contact Etac.

Always use the correct manual handling techniques.

Remember to use the client's resources.

There is a risk the client may slide down. Never leave the client alone on the edge of the bed.



Never leave the Wedge on the floor.

To ensure that the client feels safe and that every manual handling is smooth, always plan the manual handling in advance.

If in any doubt - please contact Etac.

## Materials

The Positioning Wedge is made in 100% soft and stable cold foam.

Cover: Nylon with non-slip coating.

## Cleaning

The product should be checked regularly, preferably each time it is used, and especially after wash.

Check that there is no damage to seams or fabric.



**Never try to repair a product yourself. Never use a defective product.**

### Washing instructions:

Can be wiped with disinfectant.

Do not use fabric softener.



# Articles

<b>Article no.</b>	<b>Description</b>	<b>Size (cm)</b>
IM53NS	Positioning Wedge with non-slip cover	W30 x H20 x L53
IM53/80NS	Positioning Wedge with non-slip cover	W30 x H20 x L80
IM5300NS	Non-slip cover for IM53NS	W30 x H20 x L53
IM5300/80NS	Non-slip cover for IM53/80NS	W30 x H20 x L80

Etac Sverige AB  
Box 203, 334 24 Anderstorp, Sweden  
Tel +46 371-58 73 00  
Fax +46 371-58 73 90  
info@etac.se www.etac.se

Etac AB (export)  
Box 203, 334 24 Anderstorp, Sweden  
Tel +46 371-58 73 30  
Fax +46 371-58 73 90  
info@etac.se www.etac.com/exp

Etac AS  
Pb 249, 1501 Moss, Norway  
Tel +47 815 69 469  
Fax +47 69 27 09 11  
hovedkontor@etac.no www.etac.no

Etac A/S  
Egeskovvej 12, 8700 Horsens, Denmark  
Tel +45 79 68 58 33  
Fax +45 75 68 58 40  
info@etac.dk www.etac.dk

Etac GMBH  
Bahnhofstraße 131, 45770 Marl, Germany  
Tel +49 236 598 710  
Fax +49 236 598 6115  
info@etac.de www.etac.de

Etac Holland BV  
Fluorietweg 16a, 1812RR Alkmaar, The Netherlands  
Tel +31 72 547 04 39  
Fax +31 72 547 13 05  
info.holland@etac.com www.etac.com